



RESP

CREATING SUSTAINABLE ECONOMIC
MODELS THAT BENEFIT PEOPLE AND
NATURE.

CBD Business & Biodiversity Forum



RESP

CREATING SUSTAINABLE ECONOMIC
MODELS THAT BENEFIT PEOPLE AND
NATURE.

Session 5 - Procurement and Supply Chains

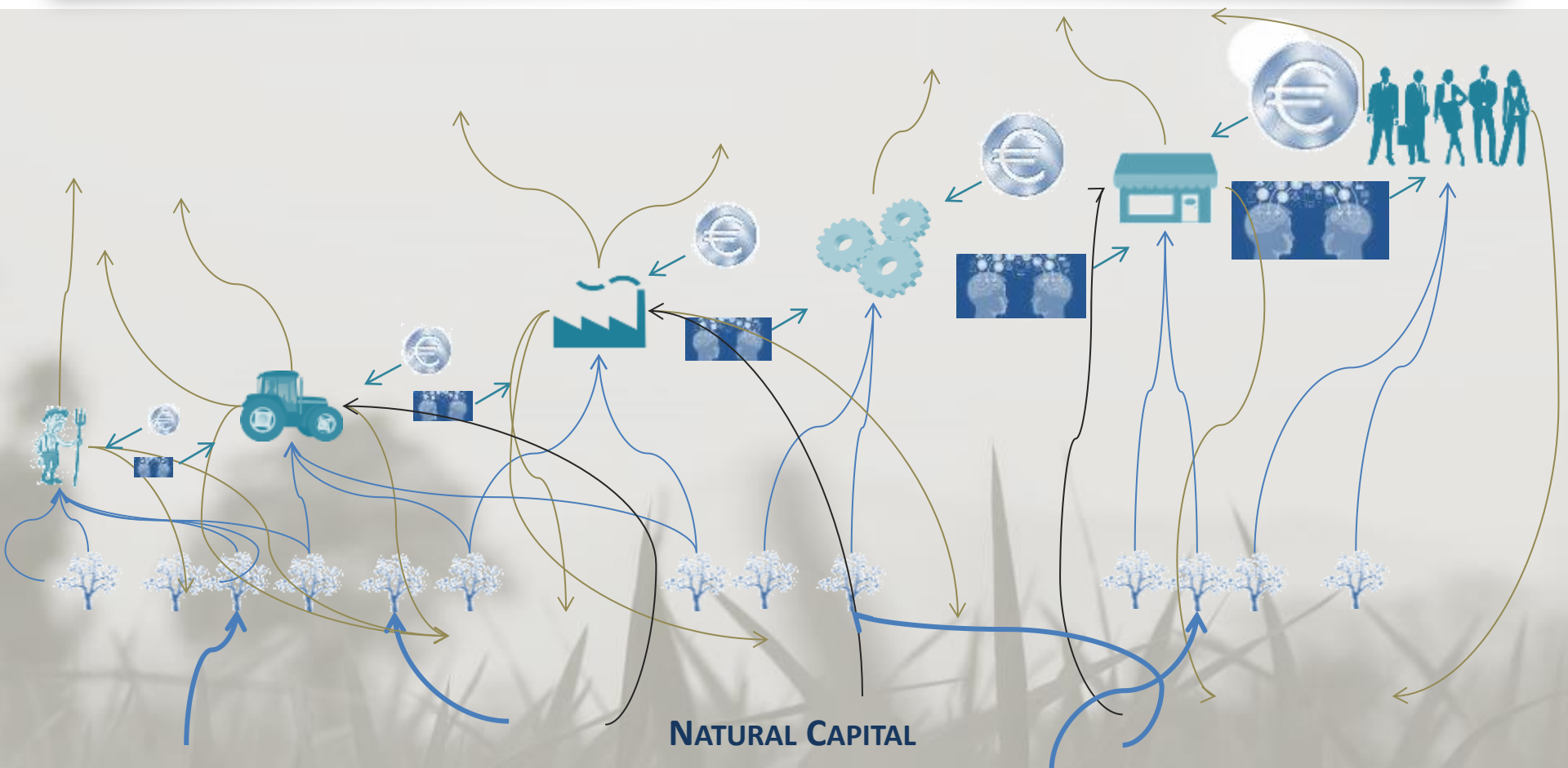
Helsinki - 11 November 2015

**RESP WAS ESTABLISHED IN 2013 WITH A MISSION TO TAKE COLLABORATIVE ACTION AND
CREATE NET POSITIVE IMPACTS BY FOSTERING CHANGE TOWARDS
THE SUSTAINABLE USE OF NATURAL CAPITAL.**

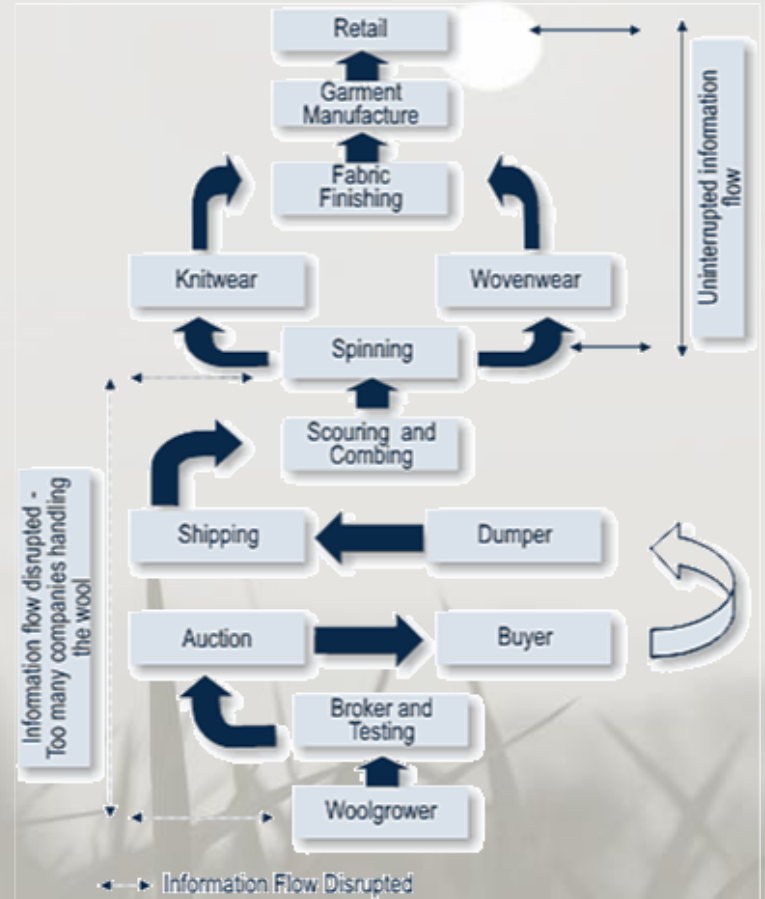
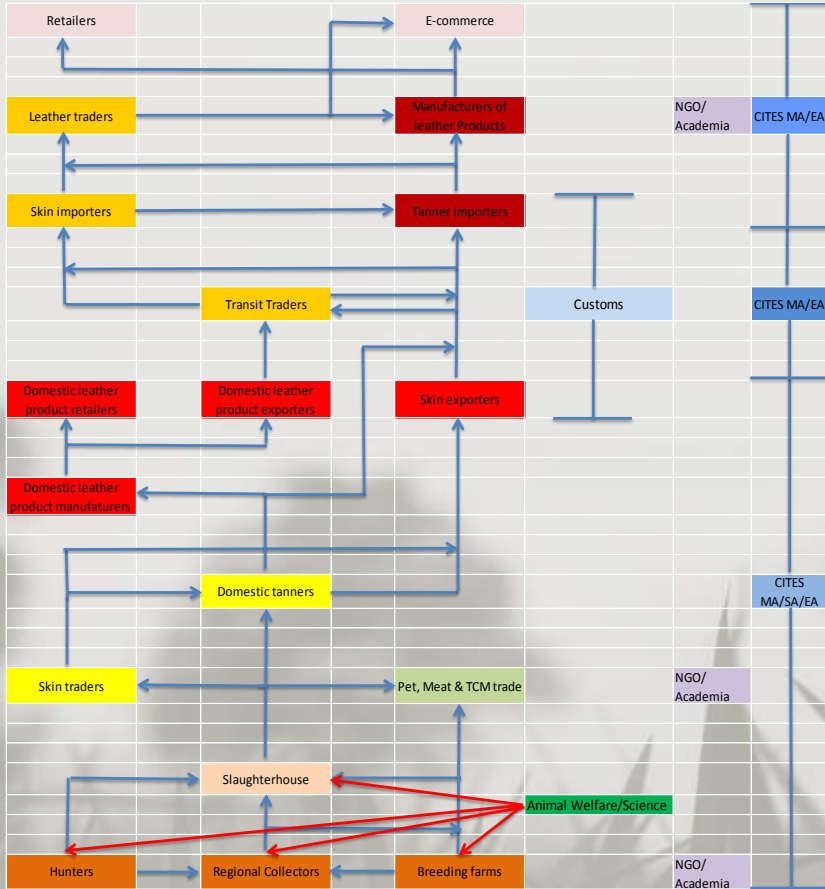


RESP CURRENTLY HAS 41 MEMBERS FROM INDUSTRY AND THE RESEARCH COMMUNITY

Defining the value chain



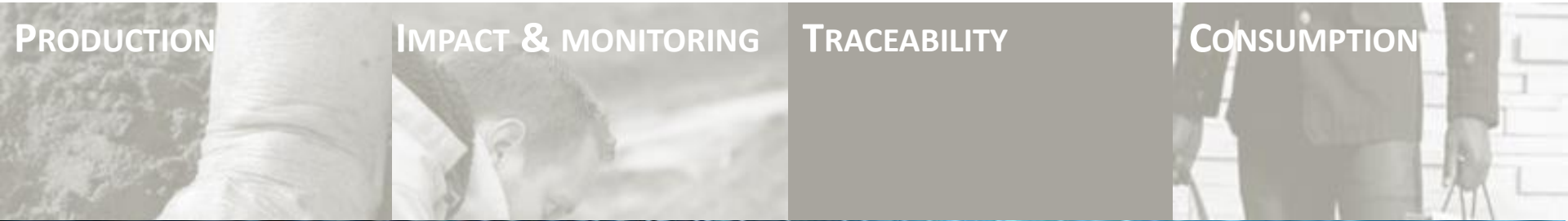
... not all value chains are the same







Cross-cutting work streams

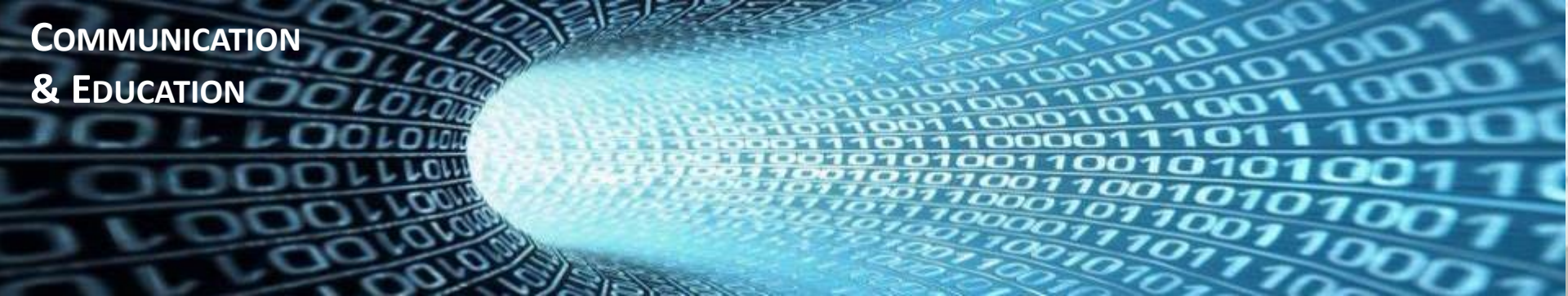


PRODUCTION

IMPACT & MONITORING

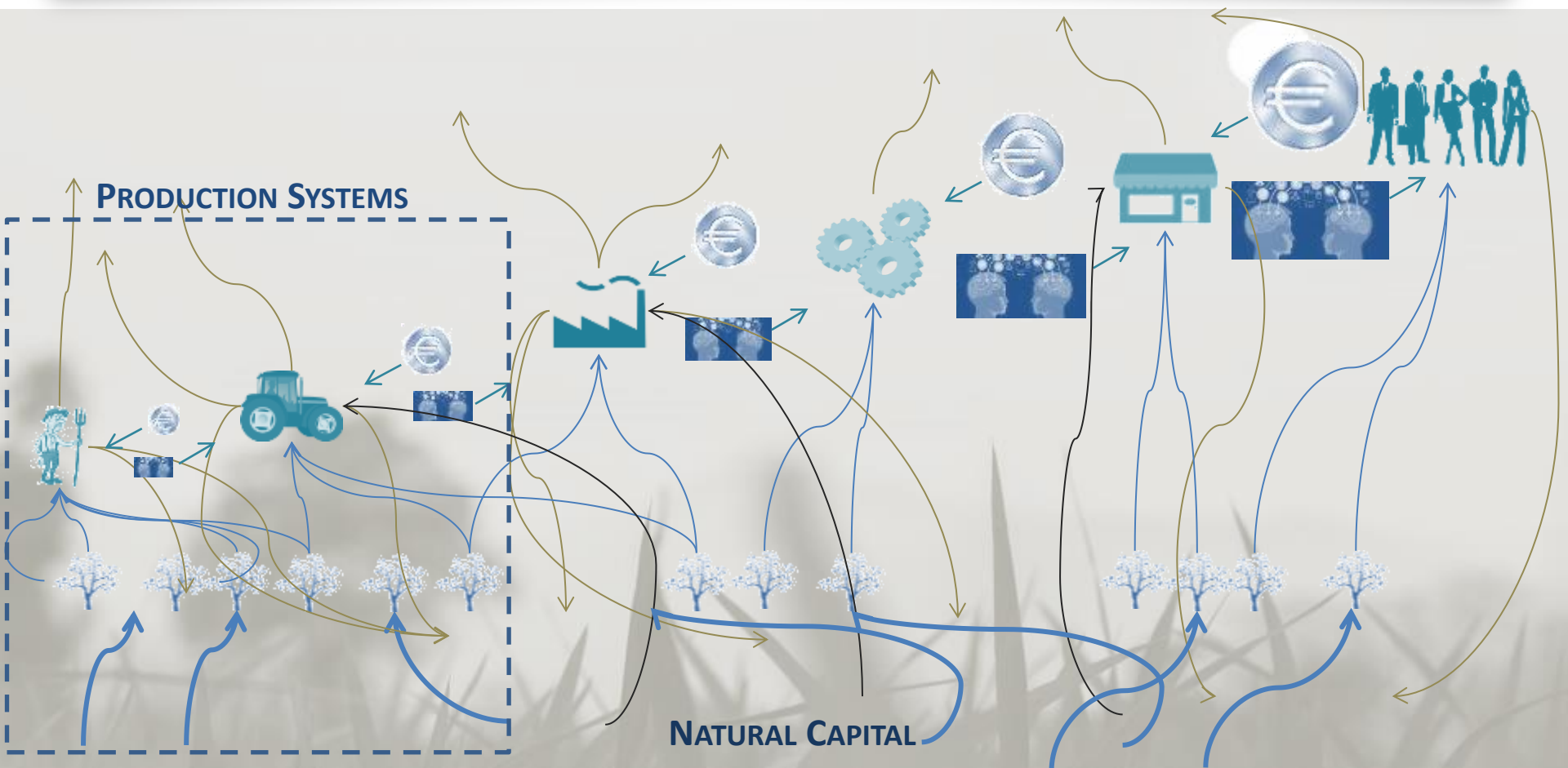
TRACEABILITY

CONSUMPTION



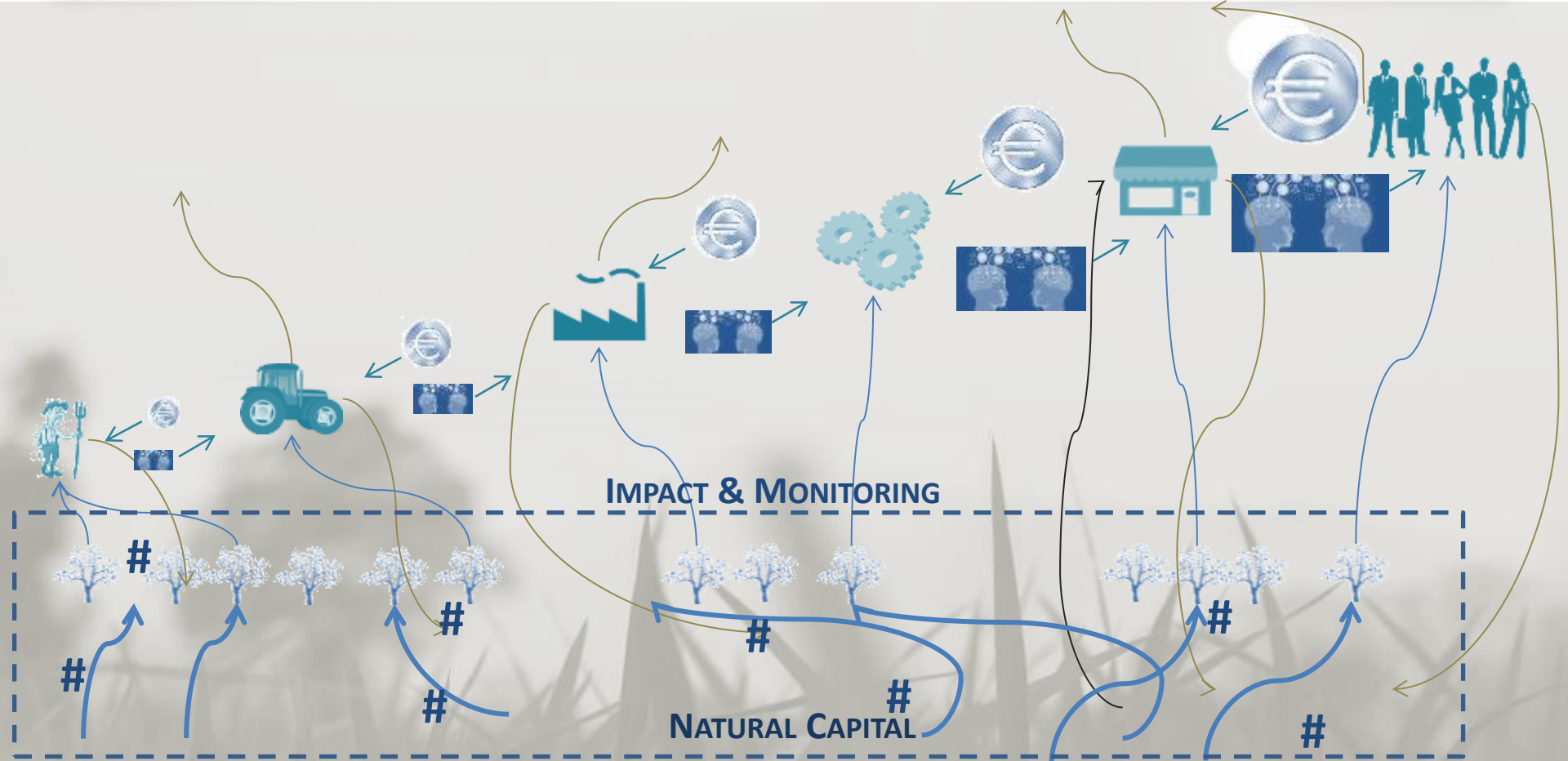
COMMUNICATION
& EDUCATION



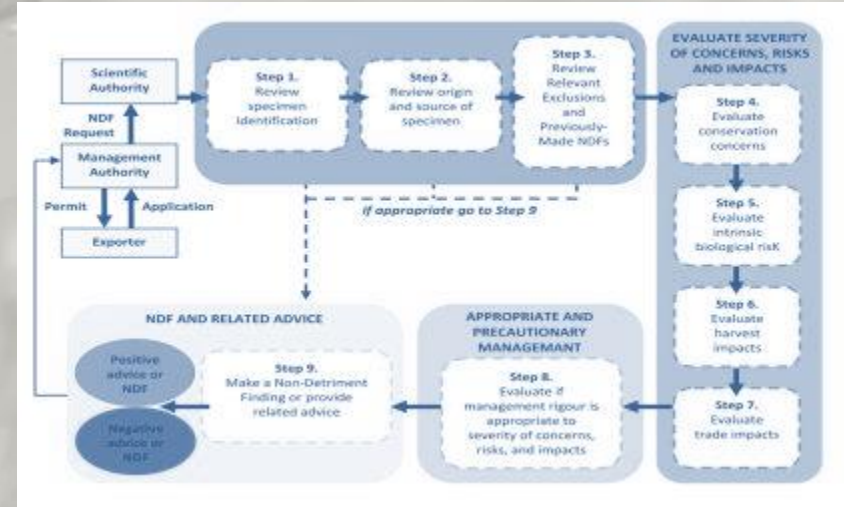




By 2017, best practices for access to, and management of, habitats and species will be in place and demonstrate quantifiable contribution to the conservation and / or regeneration of wetlands, grasslands and forest ecosystems

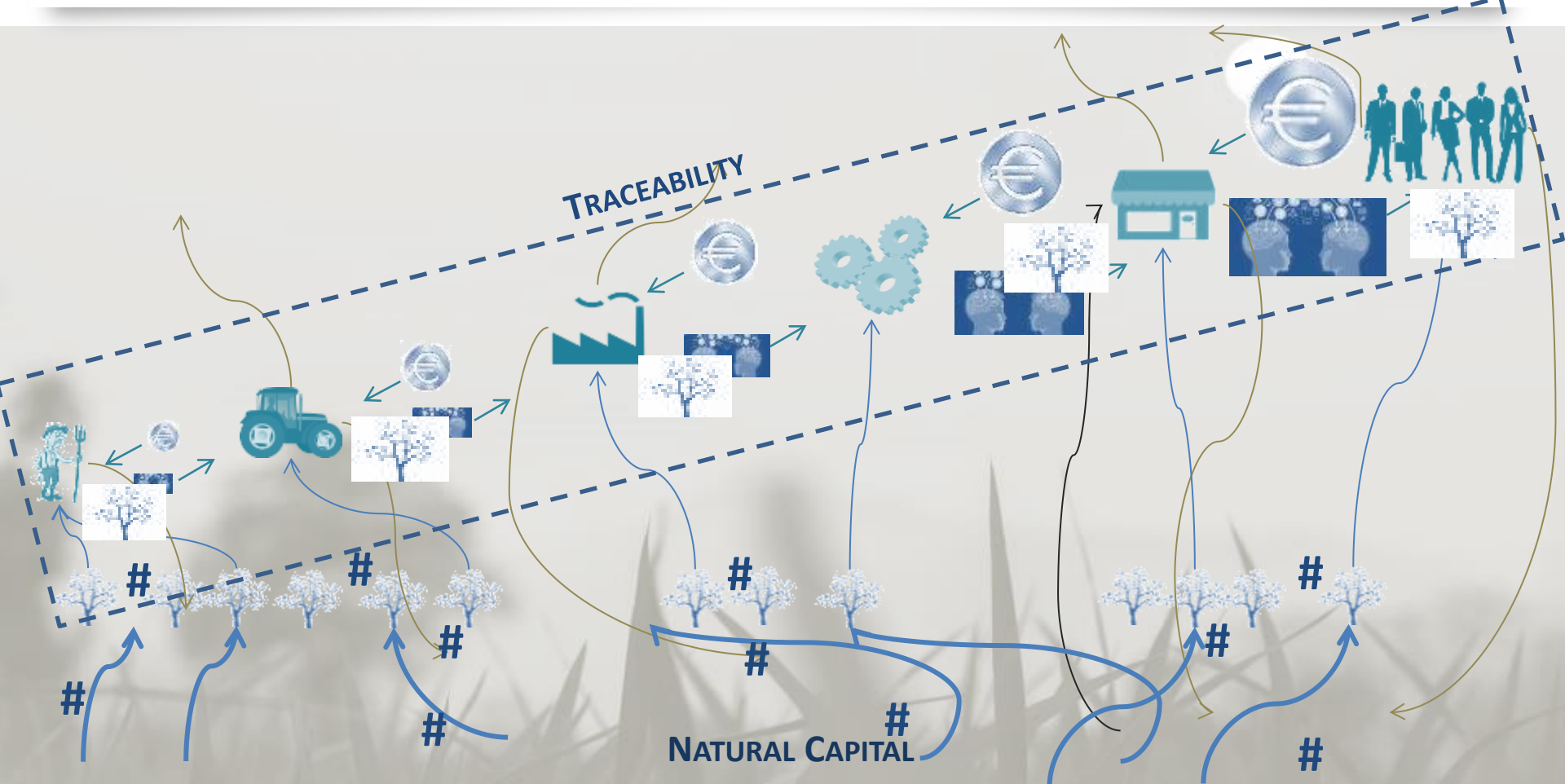


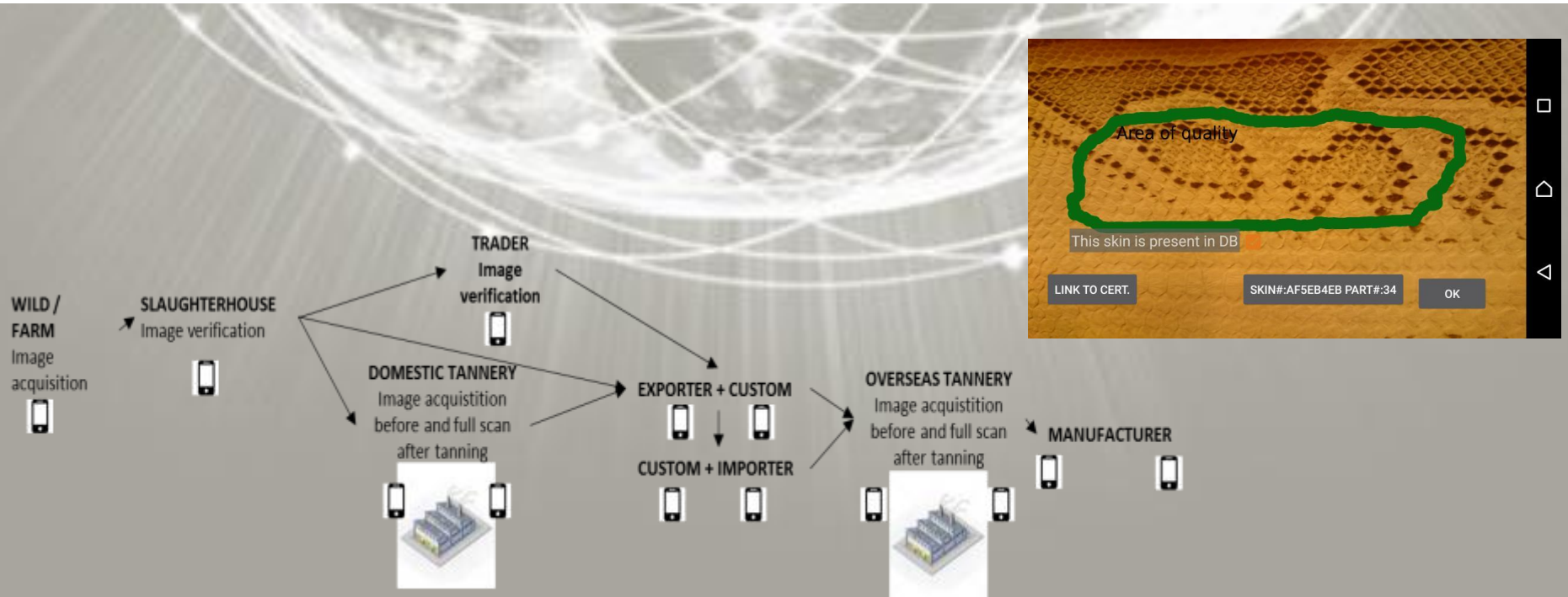
Midpoint indicator	Impact pathway	Physical unit	Economic approach	Data source	Interpretation
Erosion resistance potential	Ecosystem services	t/ha*yr	Cost of mitigation measures	WOCAT	Natural resistance change
Mechanical water purification potential	Ecosystem services	cm/day	1 st treatment	WaTER	Change in water filtration
Physicochemical water purification potential	Ecosystem services	cmol/kg _{soil}	2 nd & 3 rd treatments	WaTER	Change in water filtration
Freshwater renewal potential	Ecosystem services	mm/yr	Water to supply	UNESCO	Change in water provided
Carbon sequestration potential	Ecosystem services	tCO ₂ /ha*yr	Social cost of carbon	various	Net CO ₂ emitted
Biotic production potential	Ecosystem services	tC/ha*yr	Productivity loss	FAO	Production loss or gain



By 2017, a set of impact and monitoring indicators will be incorporated and used to quantify impacts at ecosystem level, where it is estimated that approximately 80% of the environmental impacts of the supply chain happen.

Traceability





By the end of 2017, appropriate technologies and related control systems exist and can be implemented by the industry in an accessible and economically feasible way to ensure traceability of strategic raw materials from source to shop.



CONTACT

Chemin du Champ-Gilbert 25
1256, Troinex, Switzerland



+41 22 547 1245



info@resp.ch

Follow us



TO LEARN MORE

about our projects or how to become a member:



www.resp.ch